

Boxes & Conduit Fittings

Metal Boxes & Covers

Utility Boxes

Handy/Utility Box



Steel - Steel City

Part Number	Description
583611/2SC	4" x 2-1/8" x 1-7/8" Handy/Utility Box with 1/2" knockout for Conduit, 13 Cu. in., Steel
583613/4SC	4" x 2-1/8" x 1-7/8" Handy/Utility Box with 3/4" knockout for Conduit, 13 Cu. in., Steel
583711/2SC	4" x 2-1/8" x 2-1/8" Handy/Utility Box with 1/2" knockout for Conduit, 14.5 Cu. in., Steel
583713/4SC	4" x 2-1/8" x 2-1/8" Handy/Utility Box with 3/4" knockout for Conduit, 14.5 Cu. in., Steel

Extension Ring, Steel - Steel City

Part Number	Description
593611/2SC	4" x 2-1/8" x 1-7/8" Handy/Utility Box Extension Ring with 1/2" knockout, Steel
593613/4SC	4" x 2-1/8" x 1-7/8" Handy/Utility Box Extension Ring with 3/4" knockout, Steel

4" Utility Device Cover



Steel - Steel City

Part Number	Description
58C1SC	4" x 2-1/8" Utility Device Cover, Blank, 1/4" Raised, Steel
58C4SC	4" x 2-1/8" Utility Device Cover for 4-Wire Twist-Lock Single Flush Receptacle, 1/4" Raised, Steel
58C5SC	4" x 2-1/8" Utility Device Cover for Single Receptacle, 1/4" Raised, Steel
58C7SC	4" x 2-1/8" Utility Device Cover for Duplex Receptacle, 1/4" Raised, Steel
58C30SC	4" x 2-1/8" Utility Device Cover for 1 Toggle Switch, 1/4" Raised, Steel

Switch Boxes & Accessories

Non-Gangable Old Work Switch Box



Steel - Steel City

Part Number	Description
SWB25SC	3-3/4" x 2" x 1-1/2" Non-Gangable Old Work Switch Box, Cable knockout and Non-Metallic Cable Clamp (C-5) for Non-Metallic Sheathed Cable, Steel

Metal Boxes & Covers

Switch Boxes & Accessories

Gangable Old Work Switch Box for Armored/Metal Clad Cable

Steel - Steel City



Part Number	Description
CXSC	3" x 2" x 3-1/2" Gangable Old Work Switch Box with Ears Flush for Armored/Metal Clad Cable Clamp, 18 Cu. in., 1/2" Knockout, Steel

Gangable Old Work Switch Box for Conduit

Steel - Steel City



Part Number	Description
CDOWSC	3" x 2" x 2-1/2" Gangable Old Work Switch Box with Ears Flush for Conduit, 12.5 Cu. in., 1/2" Knockout, Steel
CY1/2SC	3" x 2" x 2-1/2" Gangable Old Work Switch Box with Ears Flush for Conduit, 18 Cu. in., 3/4" Knockout, Steel
CY3/4SC	3" x 2" x 2-1/2" Gangable Old Work Switch Box with Ears Flush for Conduit, 18 Cu. in., 1/2" Knockout, Steel

Gangable Old Work Switch Box for Non-Metallic Sheathed Cable

Steel - Steel City



Part Number	Description
CXWOWSC	3" x 2" x 3-1/2" Gangable Old Work Switch Box with Ears Flush for Non-Metallic Sheathed Cable Clamp, 18 Cu. in., 1/2" Knockout, Steel
LXWOW25SC	3" x 2" x 2-1/2" Gangable Old Work Switch Box with Ears Flush for Non-Metallic Sheathed Cable Clamp, 12.5 Cu. in., 1/2" Knockout, Steel

Gangable Switch Box

Steel - Steel City



Part Number	Description
CXVSC	3" x 2" x 3-1/2" Gangable Switch Box for Armored/Metal Clad Cable Clamp, Steel
CXWVSC	3" x 2" x 3-1/2" Gangable Switch Box for Non-Metallic Sheathed Cable Clamp, Steel
CW3/425SC	3" x 2" x 2-3/4" Gangable Switch Box, 3/4" & 1/2" Knockout, Plaster Ears, Four Nail Holes for Conduit, 14 Cu. in., Steel

Boxes & Conduit Fittings

Metal Boxes & Covers

Switch Boxes & Accessories

Old Work Box Support Clip



Features:

- Clips lock old-work steel switch boxes tightly to wall plaster, dry wall, concrete block, brick or concrete
- Adapts to any wall thickness up to 3/4"

Steel - Steel City

Part Number	Description
OWCSC	Old Work Box Support Clip

Old Work Switch Box Mounting Holder



Steel - Steel City

Part Number	Description
820DSC	Old Work Switch Box Mounting Holder, 1-1/2" Maximum Wall Thickness, Steel

Masonry Boxes

Gangable Masonry Box



Steel - Steel City

Part Number	Depth	Height	Length	Volume	Material
GW125GSC	2-1/2"	3-3/4"	1-15/16"	15 cu.in.	Steel
GW135GSC	3-1/2"	3-3/4"	1-15/16"	22 cu.in.	Steel
GW235GSC	3-1/2"	3-3/4"	3-3/4"	46.9 cu.in.	Steel

Pancake Boxes

3-1/4" Round Box



Steel - Steel City

Part Number	Depth	Diameter	Description
36115C30SC	1/2"	3-1/4"	Round Box with 1/2" Knockouts and Non-Metallic Cable Clamp (C-8) for Non-Metallic Sheathed Cable

Metal Boxes & Covers

Pancake Boxes

4" Round Pancake Box



Steel - Steel City

Part Number	Depth	Description
56111SC	1-1/2"	4" Round Pancake Box with 1/2" knockouts for conduit, 6 Cu. in., Steel

Octagon Boxes & Covers

3-1/2" Octagon Box



Steel - Steel City

Part Number	Depth	Diameter	Description
241511/2SC	1-1/2"	3-1/2"	Octagon Box with 1/2" Knockout for Conduit

3 1/2" Box Cover



Steel - Steel City

Part Number	Diameter	Description
24C6SC	3-1/2"	Flat Box Cover with 1/2" Knockout for Round and Octagon Box

4" Octagon Box for Non-Metallic Sheathed Cable



Steel - Steel City

Part Number	Depth	Description
54151NSC	1-1/2"	4" Octagon Box with 1/2" Knockout & Non-Metallic Sheathed Cable Clamp (C-5), 15.8 Cu. in., Steel
54151NESC	1-1/2"	4" Octagon Box with 1/2" Knockout, Non-Metallic Sheathed Cable Clamp (C-5) & Adjustable Ears, 15.8 Cu. in., Steel
54151NLSC	1-1/2"	4" Octagon Box with 1/2" Knockout, Non-Metallic Sheathed Cable Clamp (C-5) & "L" Bracket, 15.8 Cu. in., Steel

Boxes & Conduit Fittings

Metal Boxes & Covers

Octagon Boxes & Covers

4" Octagon Box for Conduit



Steel - Steel City

Part Number	Depth	Description
541511/2SC	1-1/2"	4" Octagon Box with 1/2" & 3/4" Knockout for Conduit, 15.8 Cu. in., Steel
541513/4SC	1-1/2"	4" Octagon Box with 1/2" & 3/4" Knockout for Conduit, 15.8 Cu. in., Steel
541511/23/4SC	1-1/2"	4" Octagon Box with 1/2" & 3/4" Knockout for Conduit, 15.8 Cu. in., Steel
541713/4SC	2-1/8"	4" Octagon Box with 1/2" & 3/4" Knockout for Conduit, 22.5 Cu. in., Steel
541711/23/4SC	2-1/8"	4" Octagon Box with 1/2" & 3/4" Knockout for Conduit, 22.5 Cu. in., Steel

4" Octagon Box Extension Ring



Steel - Steel City

Part Number	Depth	Diameter	Description
551511/225SC	1-1/2"	4"	Octagon Box Extension Ring with 1/2" knockout
551511/23/4SC	1-1/2"	4"	Octagon Box Extension Ring with 1/2" & 3/4" knockouts

4" Box Cover



Steel - Steel City

Part Number	Description
54C1SC	4" Box Cover, Flat and Flank for Round and Octagon Box, Steel
54C6SC	4" Box Cover, Flat with 1/2" Knockout for Round and Octagon Box, Steel

Square Boxes & Covers

4" Square Box



Steel - Steel City

Part Number	Depth	Description
521511/2SC	1-1/2"	4" Square Box with 1/2" Knockouts for Conduit, 21 Cu. in., Steel
521513/4SC	1-1/2"	4" Square Box with 3/4" & 1/2" Knockouts for Conduit, 21 Cu. in., Steel
52151CV1/23/4SC	1-1/2"	4" Square Box with 1/2" & 3/4" Eccentric Knockouts and "CV" Bracket for Conduit, 21 Cu. in., Steel
521511/23/4EWSC	1-1/2"	4" Square Box with 1/2" & 3/4" Eccentric Knockouts for Conduit, 21 Cu. in., Steel
521711SC	2-1/8"	4" Square Box with 1", 3/4" & 1/2" Eccentric Knockouts and "CV" Bracket for Conduit, 30.3 Cu. in., Steel
521713/4SC	2-1/8"	4" Square Box with 3/4" & 1/2" Eccentric Knockouts and Ground Bump for Conduit, 30.3 Cu. in., Steel
521711/23/4ESC	2-1/8"	4" Square Box with 1/2" & 3/4" Eccentric Knockouts and Ground Bump for Conduit, 30.3 Cu. in., Steel

Metal Boxes & Covers

Square Boxes & Covers

4" Square Box Cover



Steel - Steel City

Part Number	Description
52C1SC	4" Square Box Cover, Flat and Blank Raised, Steel
52C6SC	4" Square Box Cover, Flat Raised with 1/2" Knockout, Steel

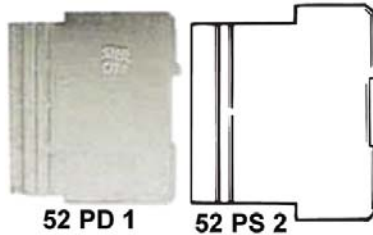
Extension Ring for 4" Square Box



Steel - Steel City

Part Number	Depth	Description
531511/23/4SC	1-1/2"	4" Square Box Extension Ring with 1/2" & 3/4" Knockout, 21 Cu. in., Steel

Partitions for 4" Square Box



Steel - Steel City

Part Number	Depth	Description
52PD1SC	2-1/8"	4" Square Box Partition for 1-1/2" Deep Box with Square Cut Tile Wall 2 Device Cover, 1/2", 3/4" or 1" Raised, Steel
52PS2SC	1-1/2"	4" Square Box Partition for 2-1/8" Deep Box with Square Cut Tile Wall 2 Device Cover, 1-1/4", 1-1/2" or 2" Raised, Steel

4-11/16" Square Box



Steel - Steel City

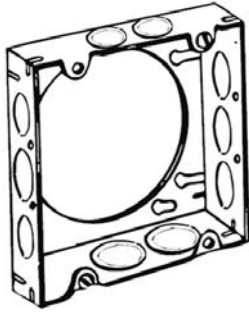
Part Number	Depth	Description
721511/23/4ESC	1-1/2"	4-11/16" Square Box with 1/2" & 3/4" Eccentric Knockout & Ground Bump for Conduit, 42 Cu. in., Steel
721711/23/4ESC	2-1/8"	4-11/16" Square Box with 1/2" & 3/4" Eccentric Knockout & Ground Bump for Conduit, 42 Cu. in., Steel
721711SC	2-1/8"	4-11/16" Square Box with 1" & 3/4" Eccentric Knockout & Ground Bump for Conduit, 42 Cu. in., Steel
721713/41SC	2-1/8"	4-11/16" Square Box with 1/2" & 3/4" Eccentric Knockout & Ground Bump for Conduit, 42 Cu. in., Steel
7217111/4SC	2-1/8"	4-11/16" Square Box with 1/2" & 3/4" Eccentric Knockout & Ground Bump for Conduit, 42 Cu. in., Steel

Boxes & Conduit Fittings

Metal Boxes & Covers

Square Boxes & Covers

Extension Ring for 4-11/16" Square Box



Steel - Steel City

Part Number	Depth	Description
731511/23/4SC	1-1/2"	4-11/16" Square Box Extension Ring with 1/2" & 3/4" Knockout, 21 Cu. in., Steel

4-11/16" Square Box Cover



Steel - Steel City

Part Number	Material	Size	Standard Carton	Description
72C1SC	Steel	4-11/16"	50	4-11/16" Square Box Cover, Flat & Blank, Steel

Plaster Rings

4" Box Cover



Steel - Steel City

Part Number	Description
54C3SC	4" Box Cover, Center Blanked with Tapped Ears on 2-3/4" Centers for Round and Octagon Box, 5/8" Raised, Steel

4" Square Box Cover



Steel - Steel City

Part Number	Description
52C33/4SC	4" Square Box Cover, Center Blanked with Tapped Ears on 2-23/32" Centers, 3/4" Raised, Steel
52C325SC	4" Square Box Cover, Center Blanked with Tapped Ears on 2-3/4" Centers, 5/8" Raised, Steel

Metal Boxes & Covers

Plaster Rings

4" Square Box Device Raised Cover for 1 Device

Steel - Steel City



Part Number	Description
52C0SC	4" Square Box Cover Device Cover for 1 Device, Flat Raised, Steel
52C13SC	4" Square Box Cover Device Cover for 1 Device, 1/2" Raised, Steel
52C14SC	4" Square Box Cover Device Cover for 1 Device, 3/4" Raised, Steel
52C145/8SC	4" Square Box Cover Device Cover for 1 Device, 5/8" Raised, Steel
52C15SC	4" Square Box Cover Device Cover for 1 Device, 1" Raised, Steel
52C16SC	4" Square Box Cover Device Cover for 1 Device, 1-1/4" Raised, Steel

4" Square Cut Tile Wall Raised Cover for 1 Device

Steel - Steel City



Part Number	Description
52C491/2SC	4" Square Cut Tile Wall Cover for 1 Device, 1/2" Raised, Steel
52C493/4SC	4" Square Cut Tile Wall Cover for 1 Device, 3/4" Raised, Steel
52C491SC	4" Square Cut Tile Wall Cover for 1 Device, 1" Raised, Steel
52C4911/4SC	4" Square Cut Tile Wall Cover for 1 Device, 1-1/4" Raised, Steel
52C5011/225SC	4" Square Cut Tile Wall Cover for 1 Device, 1-1/2" Raised, Steel
52C51225SC	4" Square Cut Tile Wall Cover for 1 Device, 2" Raised, Steel

4" Square Box Device Raised Cover for 2 Device

Steel - Steel City



Part Number	Description
52C00SC	4" Square Box Cover Device Cover for 2 Device, Flat Raised, Steel
52C1725SC	4" Square Box Cover Device Cover for 2 Device, 1/2" Raised, Steel
52C18SC	4" Square Box Cover Device Cover for 2 Device, 3/4" Raised, Steel
52C185/825SC	4" Square Cut Tile Wall Cover for Dry Wall & 2 Device, 5/8" Raised, Steel
52C19SC	4" Square Cut Tile Wall Cover for Dry Wall & 2 Device, 1" Raised, Steel
52C21SC	4" Square Cut Tile Wall Cover for Dry Wall & 2 Device, 1-1/4" Raised, Steel

4" Square Cut Tile Wall Raised Cover for 2 Device

Steel - Steel City



Part Number	Description
52C521/2SC	4" Square Cut Tile Wall Cover for 2 Device, 1/2" Raised, Steel
52C523/4SC	4" Square Cut Tile Wall Cover for 2 Device, 3/4" Raised, Steel
52C521SC	4" Square Cut Tile Wall Cover for 2 Device, 1" Raised, Steel
52C5211/4SC	4" Square Cut Tile Wall Cover for 2 Device, 1-1/4" Raised, Steel
52C5311/2SC	4" Square Cut Tile Wall Cover for 2 Device, 1-1/2" Raised, Steel
52C542SC	4" Square Cut Tile Wall Cover for 2 Device, 2" Raised, Steel

Boxes & Conduit Fittings

Metal Boxes & Covers

Plaster Rings

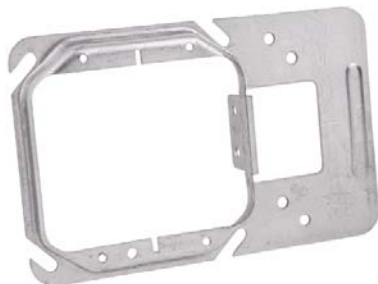
4" Box Support Raised Cover for 1 Device



Steel - Steel City

Part Number	Description
52CM145/8SC	4" Box Support Cover for 1 Device, 5/8" Raised, Steel

4" Box Support Raised Cover for 2 Device



Steel - Steel City

Part Number	Description
52CMD185/8SC	4" Box Support Cover for 2 Device, 5/8" Raised, Steel

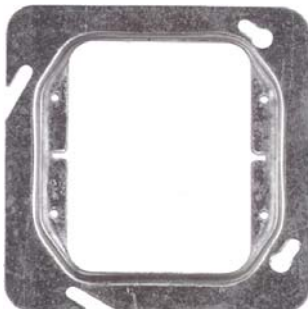
4-11/16" Square Box Raised Cover for 1 Device



Steel - Steel City

Part Number	Description
72C13SC	4-11/16" Square Box Device Cover for 1 Device, 1/2" Raised, 3 Cu. in., Steel
72C14SC	4-11/16" Square Box Device Cover for 1 Device, 3/4" Raised, 3 Cu. in., Steel
72C145/8SC	4-11/16" Square Box Device Cover for 1 Device, 5/8" Raised, 4 Cu. in., Steel
72C16SC	4-11/16" Square Box Device Cover for 1 Device, 1-1/4" Raised, 3 Cu. in., Steel
72C5011/2SC	4-11/16" Square Box Device Cover for 1 Device, 1-1/2" Raised, 3 Cu. in., Steel
72C512SC	4-11/16" Square Box Device Cover for 1 Device, 2" Raised, 3 Cu. in., Steel

4-11/16" Square Box Raised Cover for 2 Device



Steel - Steel City

Part Number	Description
72C17SC	4-11/16" Square Box Device Cover for 2 Device, 1/2" Raised, 6.3 Cu. in., Steel
72C18SC	4-11/16" Square Box Device Cover for 2 Device, 3/4" Raised, 6.3 Cu. in., Steel
72C21SC	4-11/16" Square Box Device Cover for 2 Device, 1" Raised, 6.3 Cu. in., Steel
72C5311/2SC	4-11/16" Square Box Device Cover for 2 Device, 1-1/2" Raised, 6.3 Cu. in., Steel
72C542SC	4-11/16" Square Box Device Cover for 2 Device, 2" Raised, 6.3 Cu. in., Steel

Metal Boxes & Covers

Raised Switch Covers

4" Square Surface Cover for 1 Toggle Switch



Steel - Steel City

Part Number	Depth	Description
RS9SC	1/2"	4" Square Box Surface Cover for 1 Toggle Switch, Steel

4" Square Surface Cover for 2 Toggle Switch



Steel - Steel City

Part Number	Depth	Description
RS5SC	1/2"	4" Square Box Surface Cover for 2 Toggle Switch, Steel

4" Square Surface Cover for 1 Duplex Flush Receptacle



Steel - Steel City

Part Number	Depth	Description
RS12SC	1/2"	4" Square Box Surface Cover for 1 Duplex Flush Receptacle, Steel

4" Square Surface Cover for 2 Duplex Flush Receptacle



Steel - Steel City

Part Number	Depth	Description
RS8SC	1/2"	4" Square Box Surface Cover for 2 Duplex Flush Receptacle, Steel

Boxes & Conduit Fittings

Metal Boxes & Covers

Raised Switch Covers

4" Square Surface Cover for 1 Ground Fault Receptacle



Steel - Steel City

Part Number	Depth	Description
RS16CCSC	1/2"	4" Square Box Surface Cover for 1 Ground Fault Receptacle, Steel

4" Square Surface Cover for 2 Ground Fault Receptacle



Steel - Steel City

Part Number	Depth	Description
RS17CCSC	1/2"	4" Square Box Surface Cover for 2 Ground Fault Receptacle, Steel

4" Square Surface Cover for 1 4-Wire Twist-Lock Single Receptacle



Steel - Steel City

Part Number	Depth	Hole Diameter	Description
RS4SC	1/2"	1-19/35"	4" Square Box Surface Cover for 1 4-Wire Twist-Lock Single Receptacle, Steel

4" Square Surface Cover for 1 Single Flush Receptacle



Steel - Steel City

Part Number	Depth	Hole Diameter	Description
RS11SC	1/2"	1-13/32"	4" Square Box Surface Cover for 1 Single Flush Receptacle, Steel

Metal Boxes & Covers

Raised Switch Covers

4" Square Surface Cover for 1 30 or 50 Amp Dryer or Range Receptacle



Steel - Steel City

Part Number	Depth	Hole Diameter	Description
RS13SC	1/2"	2-5/32"	4" Square Box Surface Cover for 1 30 or 50 Amp Dryer or Range Receptacle, Steel

4" Square Surface Cover for 30 Amp, 3 Wire NBR 7112 Receptacle



For use with receptacle NBR 7112, 30 amp, 3 wire; receptacle NBR 7301, 60 amp, 4 wire, receptacle NBR 7512, 50 amp, 3 wire, receptacle NBR 9430, 30 or 50 amp, 4 wire and receptacle NBR 9

Steel - Steel City

Part Number	Depth	Hole Diameter	Description
RS14SC	1/2"	2-15/32"	4" Square Box Surface Cover for Receptacle, Steel

4" Square Surface Cover for 1 Toggle Switch & 1 Duplex Flush Receptacle



Steel - Steel City

Part Number	Depth	Description
RS2SC	1/2"	4" Square Box Surface Cover for 1 Toggle Switch & 1 Duplex Flush Receptacle, Steel

4" Square Surface Cover for 1 Ground Fault Receptacle & 1 Duplex Switch



Steel - Steel City

Part Number	Depth	Description
RS19CCSC	1/2"	4" Square Box Surface Cover for 1 Ground Fault Receptacle & 1 Duplex Switch, Steel

Boxes & Conduit Fittings

Metal Boxes & Covers

Raised Switch Covers

4" Square Surface Cover for 1 Ground Fault Receptacle & 1 Toggle Switch

Steel - Steel City



Part Number	Depth	Description
RS18CCSC	1/2"	4" Square Box Surface Cover for 1 Ground Fault Receptacle & 1 Toggle Switch, Steel

4-11/16" Square Surface Cover for 1 Duplex Flush Receptacle

Steel - Steel City



Part Number	Depth	Description
RSL12SC	1/2"	4-11/16" Square Box Surface Cover for 1 Duplex Flush Receptacle, Steel

4-11/16" Square Surface Cover for 2 Duplex Flush Receptacles

Steel - Steel City



Part Number	Depth	Description
RSL8SC	1/2"	4-11/16" Square Box Surface Cover for 2 Duplex Flush Receptacle, Steel

4-11/16" Square Surface Cover for 1 4-Wire Twist-Lock Single Receptacle

Steel - Steel City



Part Number	Depth	Hole Diameter	Description
RSL4SC	1/2"	1-11/32"	4-11/16" Square Box Surface Cover for Receptacle, Steel

Metal Boxes & Covers

Raised Switch Covers

4-11/16" Square Surface Cover for 30 Amp, 3 Wire NBR 7112 Receptacle



For use with receptacle NBR 7112, 30 amp, 3 wire; receptacle NBR 7301, 60 amp, 4 wire, receptacle NBR 7512, 50 amp, 3 wire, receptacle NBR 9430, 30 or 50 amp, 4 wire and receptacle NBR 9650, 60 amp, 4 wire

Steel - Steel City

Part Number	Depth	Hole Diameter	Description
RSL14SC	1/2"	2-15/32"	4-11/16" Square Box Surface Cover for Receptacle , Steel

4-11/16" Square Surface Cover for 1 Toggle Switch



Steel - Steel City

Part Number	Depth	Description
RSL9SC	1/2"	4-11/16" Square Box Surface Cover for 1 Toggle Switch, Steel

4-11/16" Square Box Device Cover for Two Toggle Switches



Steel - Steel City

Part Number	Depth	Description
RSL5SC	1/2"	4-11/16" Square Box Surface Cover for Two Toggle Switches, Steel

Gang Boxes & Accessories

Boxes



Steel - Steel City

Part Number	Length	Width	Depth	Volume	No of Gangs	Material
3G1/23/4TB	8-5/8"	4-1/2"	1-5/8"	5.8 cu.in.	3	Steel
4G1/23/4TB	10-7/16"	4-1/2"	1-5/8"	70 cu.in.	4	Steel

Boxes & Conduit Fittings

Metal Boxes & Covers

Gang Boxes & Accessories

Box Covers



Steel - Steel City

Part Number	Length	Width	Raised	Volume	No of Gangs	Material
3GCTB	8-13/16"	4-11/16"	15/16"	13.5 cu.in.	3	Steel
4GCTB	10-5/8"	4-11/16"	15/16"	18.3 cu.in.	4	Steel