

Conduit Products

PVC Conduit Products

PVC

Schedule 40



Part Number	Description
1/2PVC	1/2" Rigid Schedule 40 Heavy Duty PVC Conduit
3/4PVC	3/4" Rigid Schedule 40 Heavy Duty PVC Conduit
1PVC	1" Rigid Schedule 40 Heavy Duty PVC Conduit
11/4PVC	1-1/4" Rigid Schedule 40 Heavy Duty PVC Conduit
11/2PVC	1-1/2" Rigid Schedule 40 Heavy Duty PVC Conduit
2PVC	2" Rigid Schedule 40 Heavy Duty PVC Conduit
21/2PVC	2-1/2" Rigid Schedule 40 Heavy Duty PVC Conduit
3PVC	3" Rigid Schedule 40 Heavy Duty PVC Conduit
31/2PVC	3-1/2" Rigid Schedule 40 Heavy Duty PVC Conduit
4PVC	4" Rigid Schedule 40 Heavy Duty PVC Conduit
5PVC	5" Rigid Schedule 40 Heavy Duty PVC Conduit
6PVC	6" Rigid Schedule 40 Heavy Duty PVC Conduit

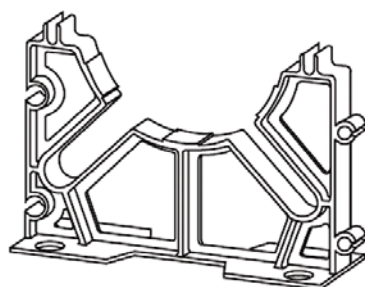
Schedule 80



Part Number	Description
1/2SCH80	1/2" Rigid Schedule 80 Extra Heavy Duty PVC Conduit
3/4SCH80	3/4" Rigid Schedule 80 Extra Heavy Duty PVC Conduit
1SCH80	1" Rigid Schedule 80 Extra Heavy Duty PVC Conduit
11/4SCH80	1-1/4" Rigid Schedule 80 Extra Heavy Duty PVC Conduit
11/2SCH80	1-1/2" Rigid Schedule 80 Extra Heavy Duty PVC Conduit
2SCH80	2" Rigid Schedule 80 Extra Heavy Duty PVC Conduit
21/2SCH80	2-1/2" Rigid Schedule 80 Extra Heavy Duty PVC Conduit
3SCH80	3" Rigid Schedule 80 Extra Heavy Duty PVC Conduit
4SCH80	4" Rigid Schedule 80 Extra Heavy Duty PVC Conduit

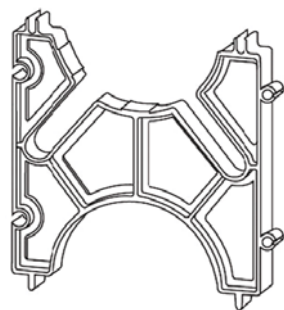
PVC Conduit Bodies & Fittings

PVC Conduit Spacers



Base Vertical-Lok Spacers

Part Number	Description
4PVCBASESPACER	4 x 3" Base Vertical-Lok Spacer



Intermediate Vertical-Lok Spacers

Part Number	Description
4PVCINNERSPACE	4 x 3" Intermediate Vertical-Lok Spacer

PVC Conduit Products

PVC Conduit Bodies & Fittings

PVC Couplings



Part Number	Description
1/2PVCCOUP	1/2" Rigid PVC Coupling
3/4PVCCOUP	3/4" Rigid PVC Coupling
1PVCCOUP	1" Rigid PVC Coupling
11/4PVCCOUP	1-1/4" Rigid PVC Coupling
11/2PVCCOUP	1-1/2" Rigid PVC Coupling
2PVCCOUP	2" Rigid PVC Coupling
21/2PVCCOUP	2-1/2" Rigid PVC Coupling
3PVCCOUP	3" Rigid PVC Coupling
31/2PVCCOUP	3-1/2" Rigid PVC Coupling
4PVCCOUP	4" Rigid PVC Coupling
5PVCCOUP	5" Rigid PVC Coupling
6PVCCOUP	6" Rigid PVC Coupling

PVC Elbows



UL 45° Elbows

Part Number	Description
1/2PVC45ELL	1/2" Standard Elbow 45°
3/4PVC45ELL	3/4" Standard Elbow 45°
1PVC45ELL	1" Standard Elbow 45°
11/4PVC45ELL	1-1/4" Standard Elbow 45°
11/2PVC45ELL	1-1/2" Standard Elbow 45°
2PVC45ELL	2" Standard Elbow 45°
21/2PVC45ELL	2-1/2" Standard Elbow 45°
3PVC45ELL	3" Standard Elbow 45°
31/2PVC45ELL	3-1/2" Standard Elbow 45°
4PVC45ELL	4" Standard Elbow 45°
5PVC45ELL	5" Standard Elbow 45°



UL 90° Elbows

Part Number	Description
1/2PVCELL	1/2" Standard Elbow 90°
3/4PVCELL	3/4" Standard Elbow 90°
1PVCELL	1" Standard Elbow 90°
11/4PVCELL	1-1/4" Standard Elbow 90°
11/2PVCELL	1-1/2" Standard Elbow 90°
2PVCELL	2" Standard Elbow 90°
21/2PVCELL	2-1/2" Standard Elbow 90°
3PVCELL	3" Standard Elbow 90°
31/2PVCELL	3-1/2" Standard Elbow 90°
4PVCELL	4" Standard Elbow 90°
5PVCELL	5" Standard Elbow 90°
6PVCELL	6" Standard Elbow 90°

Conduit Products

PVC Conduit Products

PVC Conduit Bodies & Fittings

PVC Elbows



UL Special Radius 45° Elbows

Part Number	Description
4PVCELLSCH4036"	4" UL Special Radius 90° Elbow with Solvent Bell End



Schedule 80 90° Elbows

Part Number	Description
1/2SCH80ELL	1/2" Standard Radius PVC 90° Elbow
3/4SCH80ELL	3/4" Standard Radius PVC 90° Elbow
1SCH80ELL	1" Standard Radius PVC 90° Elbow
1 1/4SCH80ELL	1-1/4" Standard Radius PVC 90° Elbow
1 1/2SCH80ELL	1-1/2" Standard Radius PVC 90° Elbow
2SCH80ELL	2" Standard Radius PVC 90° Elbow
2 1/2SCH80ELL	2-1/2" Standard Radius PVC 90° Elbow
3SCH80ELL	3" Standard Radius PVC 90° Elbow
4SCH80ELL	4" Standard Radius PVC 90° Elbow

PVC LBs



Part Number	Description
1/2PVCLB	1/2" Access Fitting, Type LB
3/4PVCLB	3/4" Access Fitting, Type LB
1PVCLB	1" Access Fitting, Type LB
1 1/4PVCLB	1-1/4" Access Fitting, Type LB
1 1/2PVCLB	1-1/2" Access Fitting, Type LB
2PVCLB	2" Access Fitting, Type LB
2 1/2PVCLB	2-1/2" Access Fitting, Type LB
3PVCLB	3" Access Fitting, Type LB
3 1/2PVCLB	3-1/2" Access Fitting, Type LB
4PVCLB	4" Access Fitting, Type LB

PVC LLs



Part Number	Description
2PVCLL	2" Access Fitting, Type LL

PVC Conduit Products

PVC Conduit Bodies & Fittings

PVC LRs



Part Number	Description
2PVCLR	2" Access Fitting, Type LR

PVC Ts



Part Number	Description
1/2PVCT	1/2" Access Fitting, Type T
3/4PVCT	3/4" Access Fitting, Type T
1PVCT	1" Access Fitting, Type T
1-1/4PVCT	1-1/4" Access Fitting, Type T
1-1/2PVCT	1-1/2" Access Fitting, Type T
2PVCT	2" Access Fitting, Type T

PVC Female Adapters



Part Number	Description
1/2PVCFTA	1/2" PVC Female Adapter, NPT Tapered Thread
3/4PVCFTA	3/4" PVC Female Adapter, NPT Tapered Thread
1PVCFTA	1" PVC Female Adapter, NPT Tapered Thread
1-1/4PVCFTA	1-1/4" PVC Female Adapter, NPT Tapered Thread
1-1/2PVCFTA	1-1/2" PVC Female Adapter, NPT Tapered Thread
2PVCFTA	2" PVC Female Adapter, NPT Tapered Thread
2-1/2PVCFTA	2-1/2" PVC Female Adapter, NPT Tapered Thread
3PVCFTA	3" PVC Female Adapter, NPT Tapered Thread
3-1/2PVCFTA	3-1/2" PVC Female Adapter, NPT Tapered Thread
4PVCFTA	4" PVC Female Adapter, NPT Tapered Thread
5PVCFTA	5" PVC Female Adapter, NPT Tapered Thread
6PVCFTA	6" PVC Female Adapter, NPT Tapered Thread

Conduit Products

PVC Conduit Products

PVC Conduit Bodies & Fittings

PVC Terminal Adapters



Part Number	Description
1/2PVCTA	1/2" PVC Terminal Adapter, Tapered Thread
3/4PVCTA	3/4" PVC Terminal Adapter, Tapered Thread
1PVCTA	1" PVC Terminal Adapter, Tapered Thread
11/4PVCTA	1-1/4" PVC Terminal Adapter, Tapered Thread
11/2PVCTA	1-1/2" PVC Terminal Adapter, Non Tapered Thread
2PVCTA	2" PVC Terminal Adapter, Non Tapered Thread
21/2PVCTA	2-1/2" PVC Terminal Adapter, Non Tapered Thread
3PVCTA	3" PVC Terminal Adapter, Non Tapered Thread
31/2PVCTA	3-1/2" PVC Terminal Adapter, Non Tapered Thread
4PVCTA	4" PVC Terminal Adapter, Non Tapered Thread
5PVCTA	5" PVC Terminal Adapter, Non Tapered Thread
6PVCTA	6" PVC Terminal Adapter, Non Tapered Thread

PVC Reducers



Part Number	Description
1805SCEPTER	3/4 x 1/2" PVC Reducer Bushing
77309SCEPTER	2-1/2 x 2" PVC Reducer Bushing

PVC End Caps



Part Number	Description
2PVCENDCAP	2" Conduit End Cap
21/2PVCENDCAP	2-1/2" Conduit End Cap
3PVCENDCAP	3" Conduit End Cap
4PVCENDCAP	4" Conduit End Cap

PVC Conduit Products

PVC Conduit Bodies & Fittings

PVC End Bells



Part Number	Description
1/2PVCENDBELL	1/2" Rigid PVC End Bell
3/4PVCENDBELL	3/4" Rigid PVC End Bell
1PVCENDBELL	1" Rigid PVC End Bell
11/4PVCENDBELL	1-1/4" Rigid PVC End Bell
11/2PVCENDBELL	1-1/2" Rigid PVC End Bell
2PVCENDBELL	2" Rigid PVC End Bell
21/2PVCENDBELL	2-1/2" Rigid PVC End Bell
3PVCENDBELL	3" Rigid PVC End Bell
31/2PVCENDBELL	3-1/2" Rigid PVC End Bell
4PVCENDBELL	4" Rigid PVC End Bell
5PVCENDBELL	5" Rigid PVC End Bell
6PVCENDBELL	6" Rigid PVC End Bell

PVC Offsets



Part Number	Description
11/4PVCOFFSET	1-1/4" Meter Offset
2PVCOFFSET	2" Meter Offset

PVC Weather Heads



Part Number	Description
3/4PVCWHEAD	3/4" Service Entrance Fitting
1PVCWHEAD	1" Service Entrance Fitting
11/4PVCWHEAD	1-1/4" Service Entrance Fitting
11/2PVCWHEAD	1-1/2" Service Entrance Fitting
2PVCWHEAD	2" Service Entrance Fitting
21/2PVCWHEAD	2-1/2" Service Entrance Fitting
3PVCWHEAD	3" Service Entrance Fitting
31/2PVCWHEAD	3-1/2" Service Entrance Fitting
4PVCWHEAD	4" Service Entrance Fitting

Conduit Products

PVC Conduit Products

PVC Conduit Bodies & Fittings

PVC TAs



Features:

- Junction Box Adapters, installed using a standard PVC coupling, offer a trouble-free and reliable PVC connection.
- JBA also maximizes the interior box wiring space unlike the use of male adapters (TA) and facilitates wire pulling the smooth internal edges limiting the potential for wire damage

Part Number	Description
1/2PVCBOXTA	1/2" Junction Box Adapter
3/4PVCBOXTA	3/4" Junction Box Adapter
1PVCBOXTA	1" Junction Box Adapter
1-1/4PVCBOXTA	1-1/4" Junction Box Adapter
1-1/2PVCBOXTA	1-1/2" Junction Box Adapter
2PVCBOXTA	2" Junction Box Adapter
2-1/2PVCBOXTA	2-1/2" Junction Box Adapter
3PVCBOXTA	3" Junction Box Adapter
3-1/2PVCBOXTA	3-1/2" Junction Box Adapter
4PVCBOXTA	4" Junction Box Adapter

PVC Junction Boxes



Features:

- Junction boxes are supplied with threaded brass inserts, brass screws, PVC gasketing and mounting feet
- Nylon and stainless steel screws, as well as larger sizes of fabricated junction boxes, are available upon request

Note: F = Threaded brass insert size.

Part Number	Height (In)	Width (In)	Depth (In)	Finish
4X4X2PVCBOX	4	4	2	PVC
6X6X4PVCBOX	6	6	4	PVC
6X6X6PVCBOX	6	6	6	PVC
8X8X4PVCBOX	8	8	4	PVC
8X8X7PVCBOX	8	8	7	PVC
12X12X6PVCBOX	12	12	6	PVC

PVC Two Hole Straps



Rigid PVC Pipe Straps

Part Number	Description
1/2PVCSTRAP	1/2" PVC Pipe Straps, 2 Hole
3/4PVCSTRAP	3/4" PVC Pipe Straps, 2 Hole
1PVCSTRAP	1" PVC Pipe Straps, 2 Hole
1-1/4PVCSTRAP	1-1/4" PVC Pipe Straps, 2 Hole
1-1/2PVCSTRAP	1-1/2" PVC Pipe Straps, 2 Hole
2PVCSTRAP	2" PVC Pipe Straps, 2 Hole